

# KDN-DIN EN 733

## STANDARDISED CENTRIFUGAL PUMPS

### BARE SHAFT ON BEDPLATE WITH MOTOR AND COUPLING



Enbloc, centrifugal electric pumps with coupling designed for a wide range of applications such as:

- Supplying water.
- The circulation of hot water for central heating.
- The circulation of cold water for air conditioning and refrigerating.
- The transfer of liquids in agriculture, horticulture and industries.
- The implementation of pumping systems.

These can be connected to a two or four pole electric motor with a coupling and mounted on a pressed metal bedplate in accordance with UNI EN 23661.

Single-stage, cast iron spiral body made to DIN-EN 733 (formerly DIN 24255), cast iron seal holder cover and motor support, flanges in accordance with DIN 2533 (DIN 2532 for DN 200).

Impeller in cast iron, encased and dynamically balanced with compensation of the axial thrust by means of balancing holes, operating (on request) with interchangeable consumable rings.

Stainless steel pump shaft supported by two large maintenance-free greased ball bearings, housed inside a special chamber of the support. Standard seal: stan-

darised mechanical seal made to DIN 24960 in carbon/carborundum with O' rings in EPDM. Packing on request with hydraulic lubricating ring and stuffing box in two easily removable parts.

**Speed of rotation:** 1450 - 2900 1/min.

**Operating range:** from 1 to 500 m<sup>3</sup>/h with a head of up to 100 metres.

**Pumped liquid:** clean, without solid or abrasive substances, not viscous, not aggressive, not crystallised and chemically neutral, close to water characteristics.

**Liquid temperature range:** from -10°C to +140°C.

**Maximum ambient temperature:** +40°C.

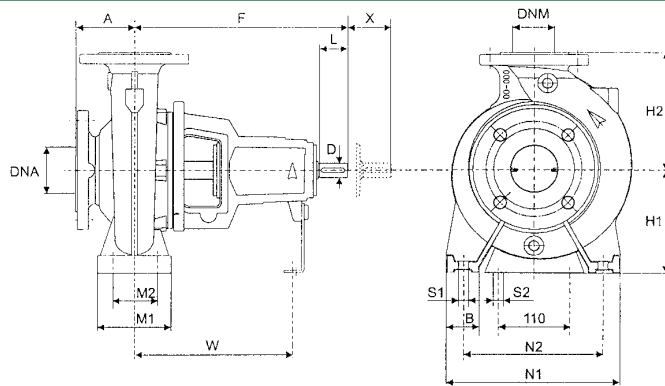
**Maximum working pressure:** 16 bar - 1600 kPa (for DN 200 max. 10 bar).

**Flanging:** PN 16 DIN 2533 - PN 10 DIN 2532 for DN 200

**Installation:** normally horizontal.

**Special versions on request:** pumps for liquids other than water.

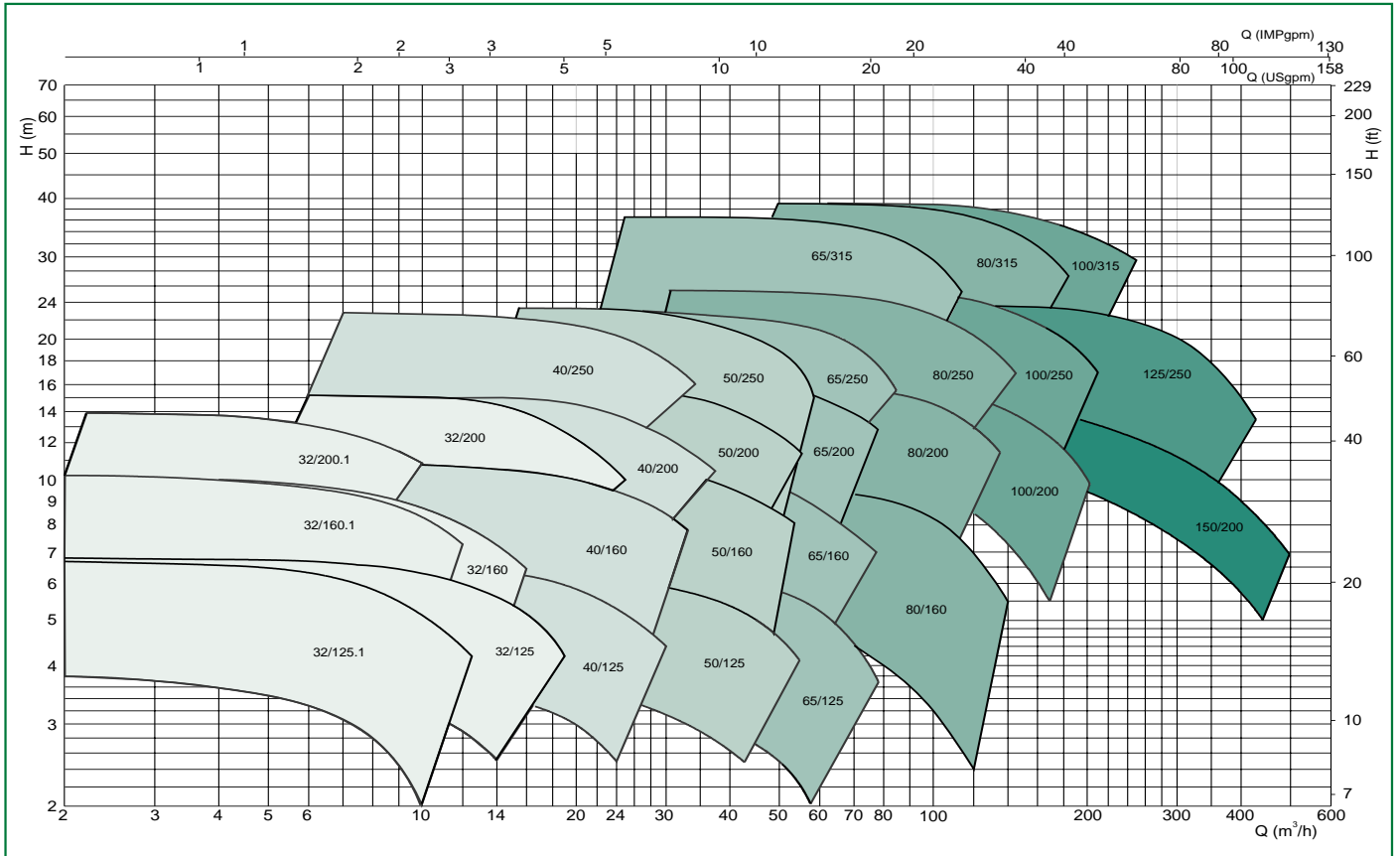
Packing (can also be fed externally). Other voltages and/or frequencies.



MODEL	$\eta$ max 1450 min <sup>-1</sup>		$\eta$ max 2900 min <sup>-1</sup>		FLANGE DIM.		PUMP DIMENSIONS				SUPPORT DIMENSIONS					BOLT HOLES		SHAFT END																
	Q m <sup>3</sup> /h	H m	Q m <sup>3</sup> /h	H m	DNA	DNM	A	F	H1	H2	B	M1	M2	N1	N2	W	S1	S2	D	L	X													
KDN 32-125.1	10.5	5.5	20.9	22	50	32	80	360	112	140	50	100	70	190	140	260	M12	M12	24	50	100													
KDN 32-125	13.6	5.8	28	22.8					132	160																								
KDN 32-160.1	8.7	8.3	17.5	33					160	180												240	190											
KDN 32-160	15.9	8.6	31	34					160	180																								
KDN 32-200.1	8.5	11.4	18	45					160	180																								
KDN 32-200	17.7	13.2	35.5	52.5					160	180																								
KDN 40-125	21.8	5.6	46	21.5	65	40	80	360	112	140	50	100	70	210	160	260	M12	M12	24	50	100													
KDN 40-160	25.8	9.2	50	37.2					132	160				240	190																			
KDN 40-200	29	12.6	57	51					160	180				265	212																			
KDN 40-250	31	19.1	62	77					180	225				65	125							95	320	250										
KDN 50-125	41	5.4	83	21.5	65	50	100	360	132	160	50	100	70	240	190	260	M12	M12	24	50	100													
KDN 50-160	43.3	9.3	87.5	37					160	180				265	212																			
KDN 50-200	41	14	81	56					180	225				65	125							95	320	250										
KDN 50-250	49	19.1	100	76					180	225				65	125							95	320	250										
KDN 65-125	57	5.2	114	21	80	65	100	360	160	180	65	125	95	280	212	260	M12	M12	24	50	100													
KDN 65-160	61	8.6	121	34.5					180	225				320	250																			
KDN 65-200	62	14.8	123	59					200	250				80	160							120	360	280	340	M16	32	80						
KDN 65-250	65.4	20	129	81					225	280				400	315																			
KDN 65-315	84	31.5	-	-					225	280				400	315																			
KDN 80-160	101	8.1	195	33.5					100	80				125	360							180	225	65	125	95	320	250	260	M12	M12	24	50	140
KDN 80-200	101	14.4	200	57.5	250	345	280	340																										
KDN 80-250	103	23	215	88	200	280	80	160			120	400	315			M16																		
KDN 80-315	136	35	-	-	250	315																												
KDN 100-200	163	13.4	315	53	125	100	125	470			200	280	80			160	120	360	280	340	M16	M12	32				80	140						
KDN 100-250	159	21.8	313	87							225	400						315																
KDN 100-315	187	34.1	-	-					250	315																								
KDN 125-250	289	20.5	-	-					150	125	140	470		250	355			80	160					120	400	315			340	M16	M12	32	80	140
KDN 150-200	378	10	-	-	200	150	160	470	280	400	100	200	150	550	450	340	M20	M12	32	80	140													

## HYDRAULIC DATA

4-POLE MOTOR (1450 r.p.m.)



## HYDRAULIC DATA

2-POLE MOTOR (2900 r.p.m.)

